



Advanced RECP Assessments

RECP Demonstration Project, among other things, aimed to support SMEs in adaptation and adoption of appropriate and affordable RECP technologies for the target industry sectors- **food, construction materials and chemicals production**. RECP demonstration assessments undertaken in selected companies identified RECP measures which would increase resource productivity and reduce environmental impact in the companies. However, implementation of some of the saving options identified through the RECP assessments required more insight into the technical, environmental and economic feasibility of these options and exploring existing and emerging green technologies which would be affordable for small and medium sized enterprises (SMEs).

COMPANIES INVOLVED IN ADVANCED RECP ASSESSMENTS



With this in mind, it was decided to undertake so called advanced RECP assessments in selected SMEs which had participated in the project as demonstration or RECP Club companies and where promising options for investments in RECP technologies had been identified. Advanced assessments would include in-depth technical, environmental and economic analysis of selected RECP investment options and development of respective implementation plans. In total,

advanced assessment of selected RECP technology options were undertaken by the project national experts in 19

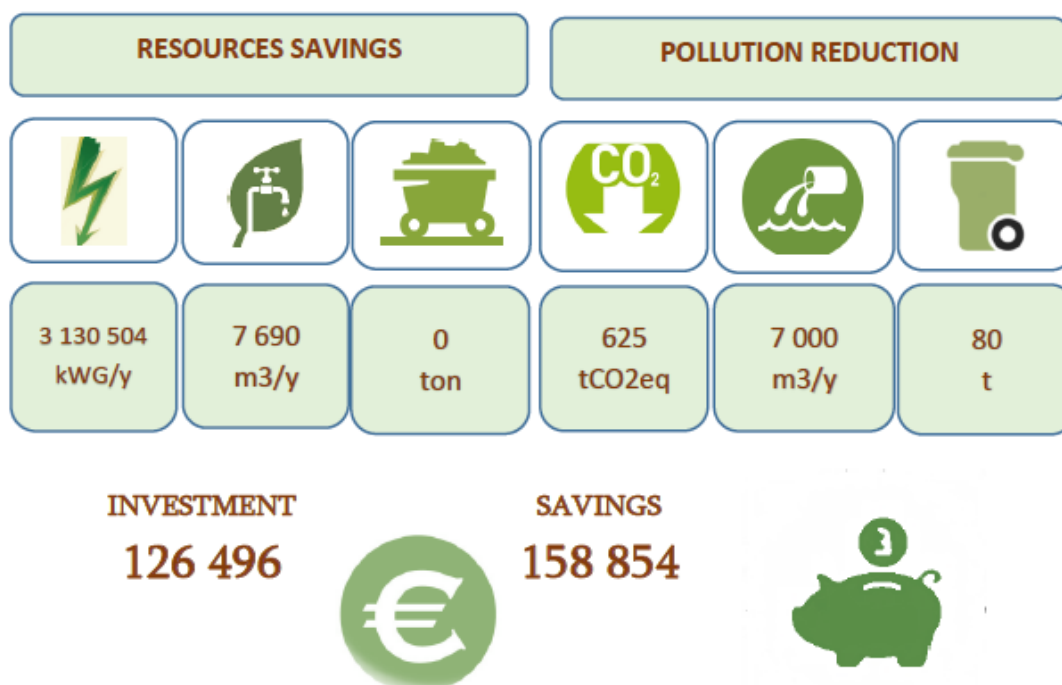
მუშავანე ეკონომიკის განვითარება ევროკავშირის აღმოსავლეთ სამეზობლოში (EaP GREEN) UNIDO-ს რესურსებიტური და სუფთა წარმოების (RECP) სადემონსტრაციო პროექტი საქართველოში

companies from the target sectors. Total resources saving and pollution reduction potential identified through all advanced assessments by sectors are summarized in table below:

Sectors	Resources savings			Pollution reduction			Required Investments (EUR)	Potential savings (EUR)
	Energy (kWh/y)	Water (m ³ /y)	Materials t/y	Carbon emissions t CO ₂ /eq/y	Waste water m ³ /y	Wastes t/y		
Food sector	4,793,666	57,310	-	977	57,310	2925	194,317	169,186
Chemical sector	2,116,577	5,000	-	423	5,000	-	36,387	85,227
Construction materials	1,040,850	-	332	207	-	-	49,080	69,778
Total	7,951,093	62,310	332	1,608	62,310	2925	279,784	324,191

Monitoring visits conducted in 2017 autumn found that some of the developed RECP measures are already undertaken by the companies or under the way.

RECP Benefits Monitored in 2017:



Further information is available at: www.recp.ge; EaP GREEN program website: www.green-economies-eap.org